

# Quartz substrate passive components

## SAC1115~SAC1120

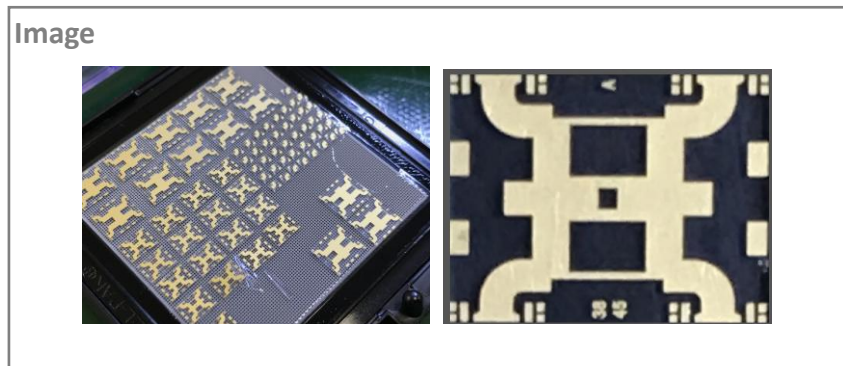
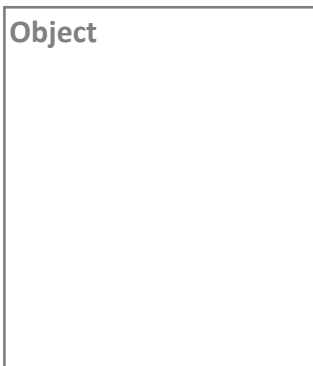
Rev.1.0

### Features

- Fabricated with semiconductor photo process
- Compatible with micro-assembly process
- Accurate exterior dimension
- Highly Repeatability from batch to batch

### Typical Applications

- Power splitter
- Power combiner
- Microwave hybrid integrated components



### Product list

Index Number	Freq (GHz)	Insertion Loss(dB)(typ.)	Description	Chip Size (mm)
SAC1115	28~30	0.6	3dB,90°Integrated absorption resistance	2.9×3.5×0.25
SAC1116	34~36	0.6	3dB,90°Integrated absorption resistance	2.65×3.3×0.25
SAC1117	32~37	0.7	3dB,90°	4×5×0.25
SAC1118	26~33	0.7	3dB,90°	5.9×5.6×0.25
SAC1119	38~45	1	3dB,90°	3.85×5×0.25
SAC1120	40~50	1.2	3dB,90°	3.35×4.5×0.25

### SuperApex Corporation

Address: 3501 Algonquin Road, Suite 230, Rolling Meadows, IL 60008, USA

Tel: 1-847-573-9866, 1-847-505-8319

E-mail: sales@superapexco.com

Website: www.superapexco.com